

Sytong

PRODUCT INSTRUCTION

Shenzhen Shi Yutong Technology Co., LTD

Cautions

- *.Please use rechargeable battery with rated voltage of **3.7V**.
- *.If item is defective, notify point of purchase contact for maintenance. Attempts to disassemble or repair the device unauthorized will make the warranty invalid.
- *.Note: Our products are fixed on the equipment and controlled by WiFi connected app. They can't be close to human eyes and will be damaged. They can only be used fixedly, with a distance of more than 20cm from human body.
- *.Do not look at the IR infrared light directly in case of damage to your eyes!
- *.Massive power will be gathered when the infrared light is turned on. Do not aim at flammable items at a close range, otherwise it may cause fire. Please turn the infrared light off or switch to sleep mode after use.



Note : only suitable for charging voltage below 5v. Do not charge the device with voltage over 5v.

This product can only be used in legal fields such as scientific research, observation, emergency search and it is strictly prohibited to be used on illegal purposes. Our company reserves the right to pursue legal liability of illegal users.

Night Vision Camera





- 3 -

Components

1*HT-770 ; 1* Micro USB cable; 1*Adapter;
 2*Hex-nut wrenches; 1* Cotton bag; 1*Power Adapter;

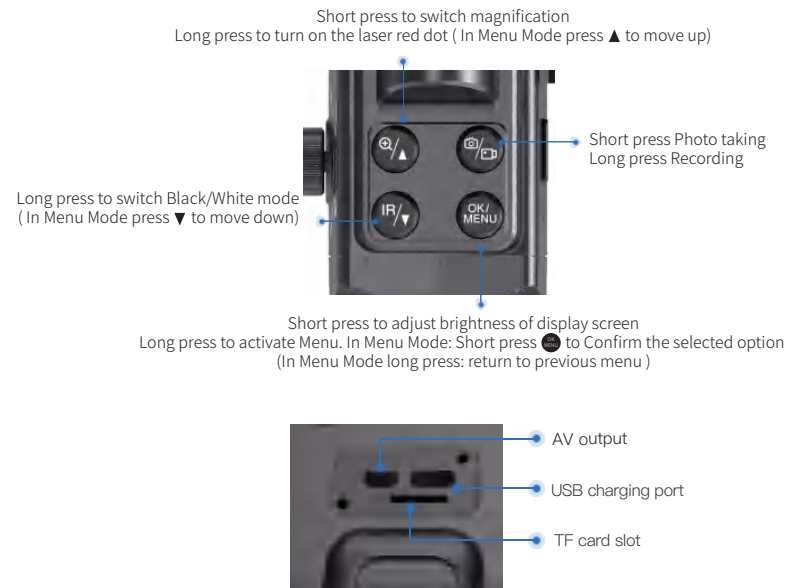
This product does not include a memory card. If you want to use functions such as taking pictures and recording, you need to prepare a FAT32 format TF card (up to 128G)

Installation

1. Battery

Please use lithium chargeable 3.7V flat battery 18650. Remove battery compartment cap and make sure setting the positive polar towards to the direction inward. Put the cap back and screw it until tight. (Fail to do so may result in restarting!).

-5-



- 4 -

2. Adjustments

To check the function after the installation of battery. First, rotate and adjust the eyepiece dioptre adjustment ring until you see the four-character icon on the screen (there's no need to see a clear image), then rotate the Objective lens adjustment ring until you can see your target clearly. Second, switch to different modes, test IR, Red dot or Rangefinder.

3. Adapter installation

Outfit the adapter to front side of the device, screw it to the bottom to fix the adapter tight. Using screws to fix the device onto scope. (Or use tape to assist the installation).

-6-

Instructions

1. Turn On/Off

Long press the Power button for 3 seconds to turn on the device. Turn off the device with a long press of Power button. Power indicator will keep ON when the device is turned on.

2. Sleep Mode

Enter sleep mode with a short press of Power/Sleep button when the device is turned on. Power indicator will keep ON when the device entering sleep mode.

3. The Eyepiece Dioptre Adjustment


The purpose of dioptre adjustment is to get a clear image for users with different vision. Rotate and adjust the dioptre adjustment ring until

-7-

6. Red dot Adjustment

Turn on the device, then turn the laser on/off with a short press of IR button. The position of laser can be adjusted on the laser adjustment holes by a hex-nut wrench.

7. Menu operation

Enter the menu with a long press of Menu button. Press  button to select options. Enter a submenu with a short press of OK button. Exit the menu with a long press of Menu button.



-9-

you get a clear view of the four-character icon on the screen. One adjustment only for each eye-view.

(Please note it's possible that the image is not clear without the adjustment of objective lens.)

4. The Objective Lens Adjustment

Make sure the eyepiece dioptre adjustment is finished. Aiming at your target, rotate and adjust the objective lens ring until you get a clear and well-focused image.

5. Infrared NV Mode

Long press IR button to enter into Black/White mode, turn on the external IR light to have better Night Vision experience.

-8-

1 > Reticle Adjustment


Long press Menu button to activate Main Menu, press "Down" button to switch to "Reticle Adjustment" and then short press "Menu" button to activate the adjustment display.

Short press "Record" button to switch between "X" or "Y", press "UP" or "Down" button to adjust the "X" or "Y" until the reticle locate at the centre of the image.

Short press "Record" to switch to "SAVE" option. Short press OK button to save the setting.



2 > Gyroscope


Enter the submenu Gyroscope with a short press of OK button. Select "Display" or "Calibration" with a short press of  button. Select "On" or "Off" to turn on/off the gyroscope after entering "Display". Turn on the gyroscope before you select "Calibration". Enter "Calibration" by pressing OK button. Keep the machine level and remain still for about 8 seconds to complete the calibration.

-10-


3 >Default Magnification

Enter the submenu Default Magnification with a short press of OK button. Select “1.0x/ 1.5x/ 2.0x/ 2.5x/ 3.0x/ 3.5x” as default magnification. Confirm your selection with a short press of OK button.

4 >Default Color


Enter the submenu Default Color with a short press of OK button. Select “Color” or “Black & White & green ” mode with a short press of  button. Confirm your selection with a short press of OK button.

5 >Brightness

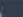
Enter the submenu Brightness with a short press of OK button. Select ”Ultra Dark” ”Dark” ”Normal” ”Bright” ”Ultra Bright”, with a short press of  button. Confirm your selection with a short press of OK button.

- 11 -


6 >Auto Recording

Enter the submenu Auto Recording with a short press of OK button. Select “Off” or “ On” with a short press of  button. Confirm your selection with a short press of OK button.

7 >Loop Recording

Enter the submenu Loop Recording with a short press of OK button. Select “Off” , “3 minutes”, “5 minutes” or “10 minutes” with a short press of  button. Confirm your selection with a short press of OK button.

8 >Date Stamp

Enter the submenu Date Stamp with a short press of OK button. Select “Off” or “ On” with a short press of  button. Confirm your selection with a short press of OK button.

9 >Record Audio

Enter the submenu record audio with a short press of OK button.

- 13 -



- 12 -

Select “Off” or “On” with a short press of  button. Confirm your selection with a short press of OK button. This setting is to realize an audio or a silent video.



- 14 -

10 >WiFi

Enter the submenu WiFi with a short press of OK button.

Select "Off" or "On" with a short press of \blacktriangle button. Confirm your selection with a short press of OK button. Exit WiFi with a long press of Menu button . (The Menu page can not be opened while WiFi is turned on) The corresponding APP is available in its official website.**WiFi password: 12345678.**

11 >Exposure

Enter the submenu exposure with a short press of OK button. Select one of the options with a short press of \blacktriangle button. Confirm your selection with a short press of OK button.

12 >Language

Enter the submenu Language with a short press of OK button. Select one of the options with a short press of \blacktriangle button. Confirm your selection with a short press of OK button.

-15-

8. Shortcuts

Power/Sleep button

Turn on the device with a long press of power button, turn off the device with a long press of power button. Enter or exit sleep mode with a short press of sleep button.



-17-

13 >Date/ Time

Enter the submenu "Date/Time" with a short press of OK button. Select one of the options with OK button. Select a correct value for year, month and date with a short press of \blacktriangle button. Select "YY /MM/DD", "MM/DD/YY" or "DD/M-M/YY" as your date format with a short press of \blacktriangle button. Save selected date and exit the submenu with a short press of Menu button.

14 >Format

Enter the submenu "Format" with a short press of OK button . Select "Memory" or " TF card" with a short press of \blacktriangle button. Confirm your selection with a short press of OK button.

Please be careful, the data can not be recovered after the device is formatted.

15 >Default Setting

Enter the submenu "Default Setting" with a short press of OK button . Select "Cancel" or " OK" with a short press of \blacktriangle button. Confirm your selection with a short press of OK button.

-16-

①.Short press to switch magnification; Long press to turn on the laser red dot.

②.Short press: take photos; Long press: Record.

③.Long press: Black/White Mode.

④.Short press: adjustment of display brightness; Long press: Main Menu.

-18-

Specifications

Model	HT-770	Battery	18650X1	Dimension	126mmX86.6mm X62mm
Magnification	1X-3.5X	Focusing	2.5cm-∞	Eyepiece resolution	1280X960
Voltage	3.7V	Data transmission	WIFI	Frame rate	30fps
Output type	AVI	Video resolution	1080p	Storage type	TF card(FAT32)
Battery life	>8h	Guide	Two rails		

-19-

Warranty

This product is warranted against defects in materials and workmanship for a period of one year from the date of purchase.

This warranty is for the original purchaser only!

Notice:

Do not disassemble the night vision device by yourself. If there is any trouble, please contact the factory in time. If the repair, modification or product seal sticker is not approved by the company, it will not be covered by the warranty.

All damage caused by human factors or accidental product damage, including use in abnormal working conditions, damage caused by failure to follow the instructions and installation, is not covered by the warranty.

-21-

Warranty card

Product model:.....

Product code:.....

Date of purchase:.....

Warranty period:.....

User Name:.....

User's phone:.....

User address:.....

Warranty records:.....

-20-

Key Specifications

General Specifications

- (1) 1x1 2.4GHz frequency band (channels 1-11)
- (2) PHY supporting IEEE 802.11b/g/n
- (3) MAC supporting IEEE 802.11 d/e/h/i/k/v/w
- (4) Built-in PA and LNA, integrated with TX/RX Switch and Balun
- (5) Station (STA) and access point (AP) modes, up to six STA devices allowed for access as an AP
- (6) WFA WPA, WFA WPA2 personal, and WPS2.0
- (7) 2/3/4-line PTA solution with BT and BLE chips coexisting
- (8) Input voltage range: 2.3-3.6 V; I/O power voltage: 1.8 V or 3.3 V
- (9) RF auto-calibration solution

-22-

PHY Features

- (1) All single-antenna data rates of IEEE802.11b/g/n
- (2) Maximum rate of 72.2Mbit/s@HT20 MCS7
- (3) Standard 20MHz bandwidth
- (5) STBC RX
- (6) Short GI

MAC Features

- (1) A-MPDU and A-MSDU
- (2) Blk-ACK
- (3) QoS

Other Information

- (1) Operating temperature: -40°C to $+85^{\circ}\text{C}$ (-40°F to 185°F)

-23-

in accordance with the instructions, may cause harmful interference to radio communications. However, there is no guarantee that interference will not occur in a particular installation. If this equipment does cause harmful interference to radio or television reception, which can be determined by turning the equipment off and on, the user is encouraged to try to correct the interference by one or more of the following measures:

- Reorient or relocate the receiving antenna.
- Increase the separation between the equipment and receiver.
- Connect the equipment into an outlet on a circuit different from that to which the receiver is connected.
- Consult the dealer or an experienced radio/TV technician for help.

This equipment complies with FCC radiation exposure limits set forth for an uncontrolled environment

-25-

FCC Warning

Any Changes or modifications not expressly approved by the party responsible for compliance could void the user's authority to operate the equipment.

This device complies with part 15 of the FCC Rules. Operation is subject to the following two conditions:

- (1) This device may not cause harmful interference, and
- (2) this device must accept any interference received, including interference that may cause undesired operation.

Note: This equipment has been tested and found to comply with the limits for a Class B digital device, pursuant to part 15 of the FCC Rules. These limits are designed to provide reasonable protection against harmful interference in a residential installation. This equipment generates uses and can radiate radio frequency energy and, if not installed and used.

-24-

